



# ONWARD!



**COMMUNITY  
FOUNDATION**  
OF GREATER FORT WAYNE

# RISE!

In 1922, a group of community leaders founded the Fort Wayne Foundation. One hundred years later, the Community Foundation of Greater Fort Wayne (CFGFW) celebrates an extraordinary year of reflection, recognition, and gratitude. For both of us, 2022 was memorable, humbling, and filled with accomplishments.

We kicked off the year at the Grand Wayne Center with a new brand, new logo, and the much-anticipated launch of our community-based *Let's Rise!* Vision Plan, which focuses on connecting people and resources to build a more vibrant community.

Each month brought new announcements, initiatives, and recognition — too many to mention all of them. Some highlights include:

- We began the process of aligning our charitable grantmaking from the Paul Clarke Endowment and Community Impact Fund with the five vision plan pillars.
- Our board participated in a series of board education sessions throughout the year and a board retreat in the fall, where we reviewed the Vision Plan and affirmed our direction.
- On June 2, our official birthday, we received a proclamation from Mayor Tom Henry, who declared the day as “Community Foundation of Greater Fort Wayne Day.” We celebrated 22 groups with grants totaling \$100,000 through our “Because We Love Our Community” grant.
- We stayed connected with important partners Lilly Endowment Inc. and the John S. and James L. Knight Foundation, keeping them engaged through visits to Fort Wayne and partnership opportunities.
- In September, we celebrated our donors and community leaders during a donor appreciation event hosted at the Embassy Theatre. We recognized community leader Eric Headley, former CFGFW board member Rob Patrick, and attorney George Bewley (posthumously) with the Paul Clarke Visionary Award.

As we look to the future, we're excited to welcome incoming board chair Ron Menze, who will lead us through the first of our next 100 years! Many thanks to all who have joined us in celebration these past 12 months, and especially to our board of directors past and present, our donors and volunteers past and present, our professional staff, and all of you working to make our community such a special place. *Onward!*

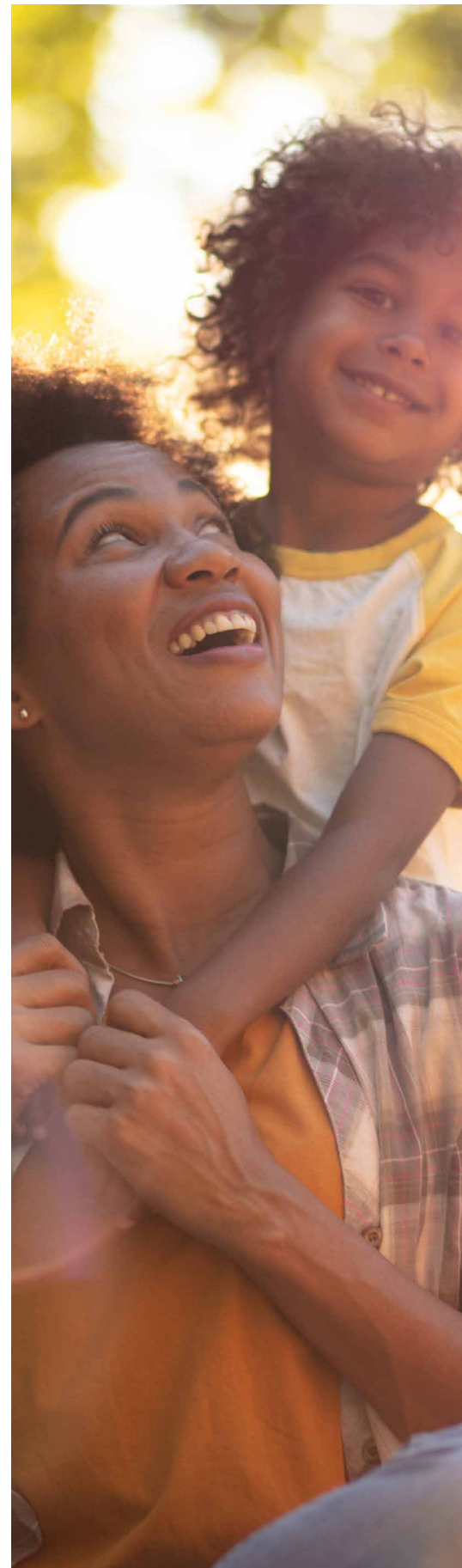


*Heather Schoegler*

**Heather Schoegler**  
Board Chair

*Brad Little*

**Brad Little**  
President and CEO



## Mission

The Community Foundation of Greater Fort Wayne serves as a community leader to improve the quality of life by building permanent endowments, promoting effective grantmaking, fostering philanthropy, stimulating community dialogue, and helping donors achieve their charitable goals.

## We Do Three Things

- 1 We help people make their charitable giving more impactful.
- 2 We connect funding to effective nonprofits through grantmaking.
- 3 We provide leadership to address community needs and improve quality of life.

## Our Pillars

-  **CONNECTED COMMUNITY**  
Affecting change by being an advocate for the underserved; instilling pride and building relationships to create a sense of belonging.
-  **INSPIRING PLACES**  
Providing resources and support to create a community filled with spaces that engage, connect, and energize our residents and visitors.
-  **EVERYONE'S ECONOMY**  
Helping create an economy where every citizen has the opportunity for upward mobility and increased security and is motivated to achieve their goals.
-  **LIFELONG LEARNING**  
Working to build a culture of lifelong learning that helps people flourish, strengthens our workforce, and increases resiliency.
-  **HEALTHY MIND AND BODY**  
Helping each person feel mentally and physically healthy, with access to tools and resources to reach their highest potential.

# MEASURE!RE!

## Community Dashboard

We truly thrive when all of our neighbors experience greater well-being and quality of life. That's why, in December, we launched the Let's Rise Community Dashboard. We hope the Dashboard will inspire area social service providers and local government agencies to work more collaboratively as they endeavor to assist all residents in experiencing a greater quality of life. This user-friendly, one-stop dashboard contains publicly available and local aggregated data detailing key indicators in CFGFW's five pillars. Each pillar has a webpage built around it, showing maps, charts, and more information.

The data will help organizations evaluate programs and services and gather additional data needed to research and/or highlight gaps in the community.



### CONNECTED COMMUNITY

**71%**

of Allen County residents report visiting with friends or relatives two or more times per month, on average.



### INSPIRING PLACES

**54%**

of Allen County residents somewhat or strongly agree their community has enough arts & cultural resources.



### EVERYONE'S ECONOMY

**74%**

of Allen County residents expect to fare the same or better financially in 2023, as compared with 2022.



### LIFELONG LEARNING

**80%**

of Allen County residents feel there are opportunities to learn in their communities.



### HEALTHY MIND AND BODY

**63%**

of Allen County residents who exercise report doing so by themselves.

Visit [cfgfw.org/community-dashboard](https://cfgfw.org/community-dashboard) to use the dashboard and learn more.



*"I love all the Community Foundation is doing with this [dashboard] initiative, I think it has great potential to provide leading indicators of both positive and negative changes for us."*

Patti Hays, CEO, AWS Foundation



## To the Future

We unveiled a new visual identity and our *Let's Rise!* Vision Plan at a 100th-anniversary celebration event in 2022. As we celebrate this significant milestone, we also reflect on our successes—which wouldn't be possible without significant leadership, visionary action, and community involvement.

As we move forward into our next 100 years, we know that it will take even more collaboration, consistency, and commitment to help Allen County reach new heights—creating meaningful, generational impact on our residents and community.



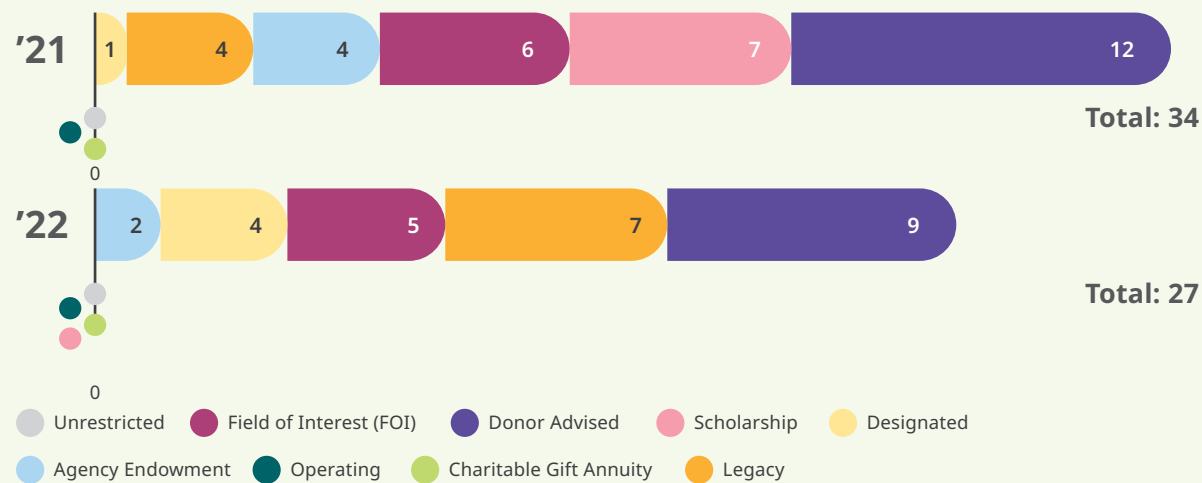
# CELEBRATE!

# GIVE!E!

## CHARITABLE GIVING

With our deep community knowledge and nonprofit expertise, the Community Foundation of Greater Fort Wayne is a philanthropic center of our community. We'll connect you to the organizations and people who are making a difference near or far—so you can create a legacy in the place where your lifelong memories were made.

### NEW FUNDS BY FUND TYPE



### TOTAL GIFTS BY FUND TYPE

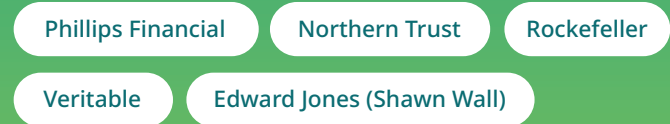
	2021	2022
Unrestricted	\$87,774	\$113,361
Field of Interest (FOI)	\$1,508,338	\$1,148,210
Donor Advised	\$6,658,188	\$3,629,095
Scholarship	\$206,566	\$273,164
Designated	\$3,200,793	\$1,484,013
Agency Endowment	\$468,686	\$457,519
Operating	\$2,819,786	\$943,235
Charitable Gift Annuity	n/a	n/a
Legacy	n/a	n/a
<b>Total</b>	<b>\$14,950,131</b>	<b>\$8,048,597</b>

## New Fund List

- Berry Family Fund
- Betty G. Fishman Designated Charitable Fund
- Cedar Creek Women's Club Designated Endowment Fund
- Christine Meek Memorial Fund
- Educator Wellness Fund
- Edward Jones - Region 57 Community Support Fund
- Gertrude and Imogene Beahrs Endowment Fund
- Jacquay Family Giving Fund
- JMJRALSP Fund
- Kevin Rowan C.O. Moellenhour Camp Memorial Fund
- Mosaic Celebration Fund
- Panther Family Fund
- Randall A. Zollinger Legacy Fund
- Robert D. and Helen J. Beahrs Endowment Fund
- Schenkel Family Foundation FOI Fund
- Schenkel Family Foundation Fund
- Shive Family Charitable Trust Fund
- Sigma Chi (Xi Chapter) Scholarship Designated Fund
- Summit Legacy Foundation Fund
- United Front Christian Faith Fund
- WBA Endowment Fund
- Wetherill Family Endowment Fund
- Wetherill Family Fund
- Women's Emergency FOI Fund
- Women's Emergency Fund
- Wunder Fund
- YLNI Agency Endowment Fund

## Professional Advisor Partners

Thank you to participants in our Donor and Advisor Partner Program! This customized investment approach allows donors to work with an investment advisor they know and trust, while our expert staff work with the donors to help them accomplish their philanthropic goals.



## Professional Advisor Leadership Council

In 2022, we hosted our first Professional Advisor Leadership Council. The Professional Advisor Leadership Council aims to network with like-minded professionals, share trends, unique challenges, and opportunities, and expand our collective knowledge of philanthropy in our work and the community. We are grateful for this close group of advisors, whose goal is to meet bi-annually and create a strong network for philanthropy in our community.

### Participating Advisors

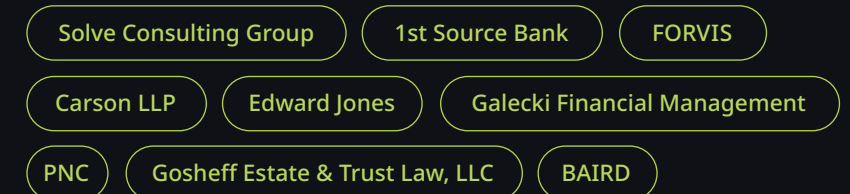


Photo courtesy of Stephen J. Bailey

Fund Spotlight:

# George Robert & Ora Merl Davis Scholarship



Pictured: Kathleen DeVore and George Davis



**Kathleen DeVore has long made charitable donations to scholarships that support students at her alma mater, South Side High School.**

Recently, she reflected on the individuals that those scholarships were made in honor of—and the impact they had on students. Then, she wondered, “Why isn’t there a scholarship honoring George and Ora Davis?”

So she made one.

When Kathleen was a senior at South Side High School in 1963, George Davis was her chemistry teacher, and Ora Davis—George’s father—was her assistant principal. “Mr. Davis made chemistry fun, but more importantly, he was a devoted and dedicated teacher,” said Kathleen. “I only had the one class with him, but at every class reunion, he gave us a tour of the school, and he remembered all our names. He even gave us back our chemistry homework he still had at our 50th!” Ora and George each served South Side High School for around 40 years.

Kathleen, a retired nurse and public health administrator, was familiar with the process of funds through her philanthropic giving, as well as having family who started funds. “I was worried that the minimum was going to be a high amount that I couldn’t fund

myself, but the minimum was reasonable,” explained Kathleen. Kathleen also solicited funds through Facebook messages from about 100 people. “I didn’t even know them all,” she laughed. “But George and Ora made a difference in so many students’ lives, and they were happy to honor him in this way.”

“My experience was so easy compared to others’ I had heard about,” she said. “I wanted George to have primary control over the criteria, and with the help of the Community Foundation, it will continue to be distributed without my involvement.”

Every five years, new members are inducted into the South Side High School Distinguished Alumni Society that George Davis started in 1996. At the conclusion of the program last year, Kathleen surprised Mr. Davis with the announcement of the Scholarship Fund in his and his father’s honor. The Alumni Association also honored him by naming the chemistry classroom the George Davis Chemistry Lab. “He was beaming,” said Kathleen.

The George Robert Davis and Ora Merl Davis scholarship is awarded to students with financial need who took chemistry and math courses. The first recipient will attend Huntington University for crop science and agronomy in the fall.



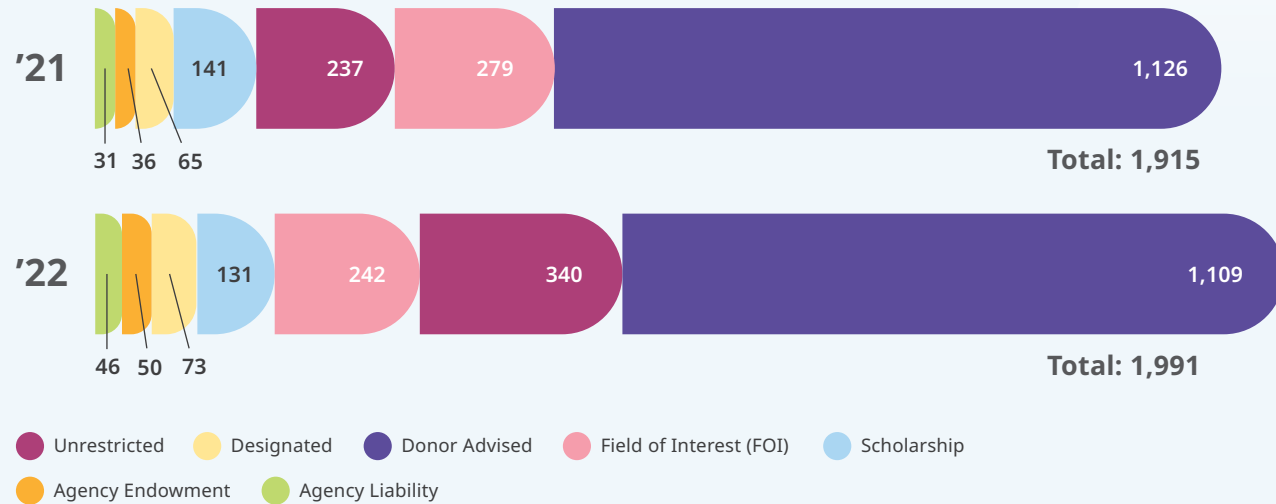


# IMPACT!

## OUR GRANTMAKING

The Community Foundation offers many different grant programs with the goal to bring about positive change and impact while making our community the best place to live, work, and play.

### GRANTS BY FUND TYPE



### GRANTS BY IMPACT AREA

2021		2022	
Arts & Culture	\$667,191	Arts & Culture	\$796,122
Community Development	\$1,140,031	Basic Human Needs	\$1,001,812
Education	\$1,738,428	Physical & Mental Health	\$1,347,787
Health & Human Services	\$3,590,022	Youth & Education	\$2,789,788
Other	\$956,481	Other	\$3,337,711
<b>Total</b>	<b>\$8,092,154</b>	<b>Total</b>	<b>\$9,273,220</b>

To reflect strategic planning updates, grant categories were updated from 2021–2022.

## Nonprofit Trainings & Seminars

### Certificate in Fund Raising Management (CFRM)

In 2022, we partnered with the Indiana University Lilly Family School of Philanthropy to bring their highly regarded Fund Raising School to Fort Wayne. In the spring and summer, participants were able to receive their Certificate in Fund Raising Management (CFRM) through a four-course curriculum being offered locally.



### Jumpstart

In partnership with Network for Good, we offered Jumpstart, a 12-month fundraising capacity building program. The participating organizations received personal coaching, professional services, software, and an evidence-based framework in this immersive, year-long program.



The CFRM increased my skills, knowledge, and confidence in fundraising. Moreover, the Community Foundation hosting this program allowed me to learn alongside a diverse cohort of Fort Wayne area nonprofit leaders—I gained an invaluable network of colleagues and friends!”

Wendy Hoering,  
Executive Director,  
Hope's Harbor Family  
Hospitality Homes



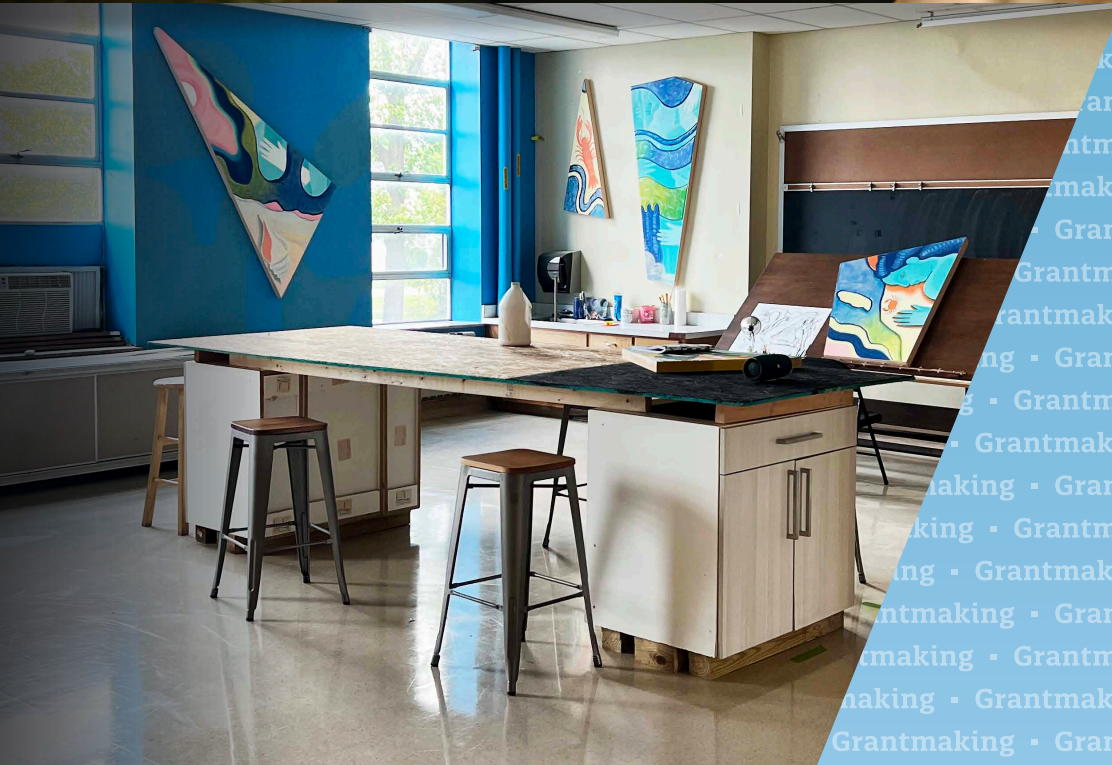
2022 CFRM program participants

Grantee Spotlight:

# Studio Vwazen, Lyndy Bazile



Pictured: Lyndy Bazile



BECAUSE WE LOVE OUR COMMUNITY GRANT RECIPIENT



Lyndy Bazile moved to the Renaissance Pointe neighborhood in 2016 after her son was born. A full-time artist, Lyndy turned a room in her house into a studio, but quickly realized she needed a workspace outside of her home — as well as the opportunity to collaborate with other artists to support one another and deepen their practices. And the idea for *Studio Vwazen* was born.

*Vwazen* means “neighbor” in Haitian Creole. Lyndy’s dad is from Haiti, and her ancestry is an important part of her process and inspiration. “The word makes me feel more rooted in my identity, and it perfectly represents everything I aspired to accomplish with the studio space. It’s about collaborative community empowerment,” said Lyndy.

She began searching for spaces that she could rent or buy to turn into a studio space, but couldn’t find a suitable property. Finally, after months of searching, all her cards aligned. “I heard about the Community Foundation’s *Because We Love Our Community* grants and thought, this grant matches the goal perfectly. I hustled to put an application in and was awarded a grant, and then, it felt so lucky that our current space became available around the same time.”

Studio Vwazen, a multi-artist studio and community arts space in Southeast Fort Wayne, officially opened in February 2023. It features a three-month studio artist fellowship, studio space available for rent, workshops, and more. It’s also home to Renaissance Pointe neighborhood association meetings.

“I believe creative collaboration is the key to healing our community, and practicing collaboration is an active choice we all must make every day. Art is the tool I use to exercise creativity and collaboration in my community,” said Lyndy. “And I want to make sure everyone in my community has the support they need to do the same.”

Studio Vwazen’s goal is to help artists in Southeast Fort Wayne, especially young artists, realize their creative careers. Lyndy explained, “I want my neighbors to feel supported as they invest in themselves, as well as know that an artistic career is a viable option. We couldn’t have brought that spirit to the community without the Community Foundation’s support. For many of us who are creating a path that we haven’t seen walked before, it’s hard to understand the resources that are available to you. And often, those resources are hard to obtain. I’m grateful for the accessibility that Community Foundation provided in this grant process.”



# UNITE!

## COMMUNITY INITIATIVES

Our three community initiatives help move forward important issues, ensure continued innovation and collaboration, and help make the place we call home — and everyone in it — the best we can be.



### Youth Empowered Philanthropy

Youth Empowered Philanthropy (YEP) teaches youth about charitable giving while empowering our youth to make real decisions, with real money, to create an impact in Allen County. In 2022, students scored over 50 grant applications and held their own student-led grant cycle. They conducted site visits, meeting with nonprofit executives to learn more about their organizations. The group decided to grant three organizations a total of \$10,000.

- Positive Resource Connection \$4,000
- HearCare Connection \$3,000
- Cass Housing \$3,000

#### Represented Schools

- Canterbury School
- North Side High School
- Northrop High School
- Snider High School
- Wayne High School

### Children's Health Collaborative

In collaboration with the Allen County Department of Health and direct service providers, the Children's Health Collaborative (CHC) initiative works to ensure every child in Allen County reaches their full potential by advocating for evidence-based, community-specific initiatives, such as Regional Enrichment Centers, Well Child Exams, the Child Maltreatment Task Force, and more. In 2022, CHC partnered with Purdue Fort Wayne social work students to help them provide hands-on internships at Adams Elementary School. Because of these efforts, CHC received the Indiana School of Social Work Outstanding Partner Award for exemplifying the social work professional values and ethics in the BSW program.



#### Mentorship Partner Programs

- Fort Wayne Police and Firefighters mentored K-5th grade students at YMCA and Wellspring Interfaith Social Services.
- Purdue University Fort Wayne School of Education students mentored 6th graders at New Haven Intermediate School.
- Indiana University Fort Wayne Schools of Health & Human Sciences and Medicine mentored Fort Wayne Community Schools high school students.



### Women's Fund

The Women's Fund provides research, education, and advocacy centered on making Allen County more equitable for women, their families, and our community. These efforts are directed towards three focus areas: economic security, personal safety, and young women and girls.

#### ECONOMIC SECURITY

The Compass Survey was launched to gather workforce demographic information, as well as available policies and benefits. Fifteen of the 48 who participated joined a cohort and gained access to an Employer Toolkit. The survey results were used to inform the first Women in the Workforce Report.

#### PERSONAL SAFETY

The Women's Fund advocated for the establishment of a domestic violence court and launched No Matter What, a sexual violence campaign to connect sexual violence survivors quickly, efficiently, and discreetly with local, up-to-date resources. QR code stickers for the resource were placed in over 100 locations.

#### YOUNG WOMEN & GIRLS

The Young Women & Girls Report was released at a sold out Young Women & Girls Summit, with a keynote by Fort Wayne native and National Bestselling Author Ashley C. Ford. The report has been used by local programs such as Girl Scouts and Fort Wayne Community Schools to inform programming and expand grant funding.

# Support Our Funds

For over 100 years, forward-thinking community members have created opportunities to improve the quality of life in Allen County through donations to Community Foundation funds. If you are excited about the work we are accomplishing in the community, we invite you to donate directly to one of these funds and help us carry out our mission. Every gift, at every size, reflects your commitment to improving our community.



## ➤ Let's Rise! Vision Fund

We truly thrive when all our neighbors experience greater well-being and quality of life. The *Let's Rise! Vision Fund* allows us to make an immediate impact in the Community Foundation's five pillars of well-being: Connected Community, Inspiring Places, Everyone's Economy, Lifelong Learning, and Healthy Mind & Body. Support for this fund allows us to research and identify the root causes of inequities that exist locally, and to invest in long-term solutions that create a stronger community for all.

## ➤ Community Impact Fund

The Community Impact Fund supports our *Rising Together* grant program, helping hundreds of local nonprofits make an impact in our community. Grants from this fund reflect our community's ever-changing people, needs, ideas, and issues. *Rising Together* grants help a wide range of nonprofits and charitable organizations across our community, such as soup kitchens and food banks, transitional housing facilities, after-school programs for underserved kids, case management providers for families in need, emergency housing organizations, organizations serving people with disabilities, and countless other entities working daily to instill hope in our neighbors.

## ➤ Community Scholarship Fund

The Community Scholarship Fund provides scholarships and financial assistance to qualified students in Allen County. This fund allows Allen County students to achieve their dreams of higher education and sets them on the path to success while helping to alleviate some of the financial burdens associated with obtaining a degree.

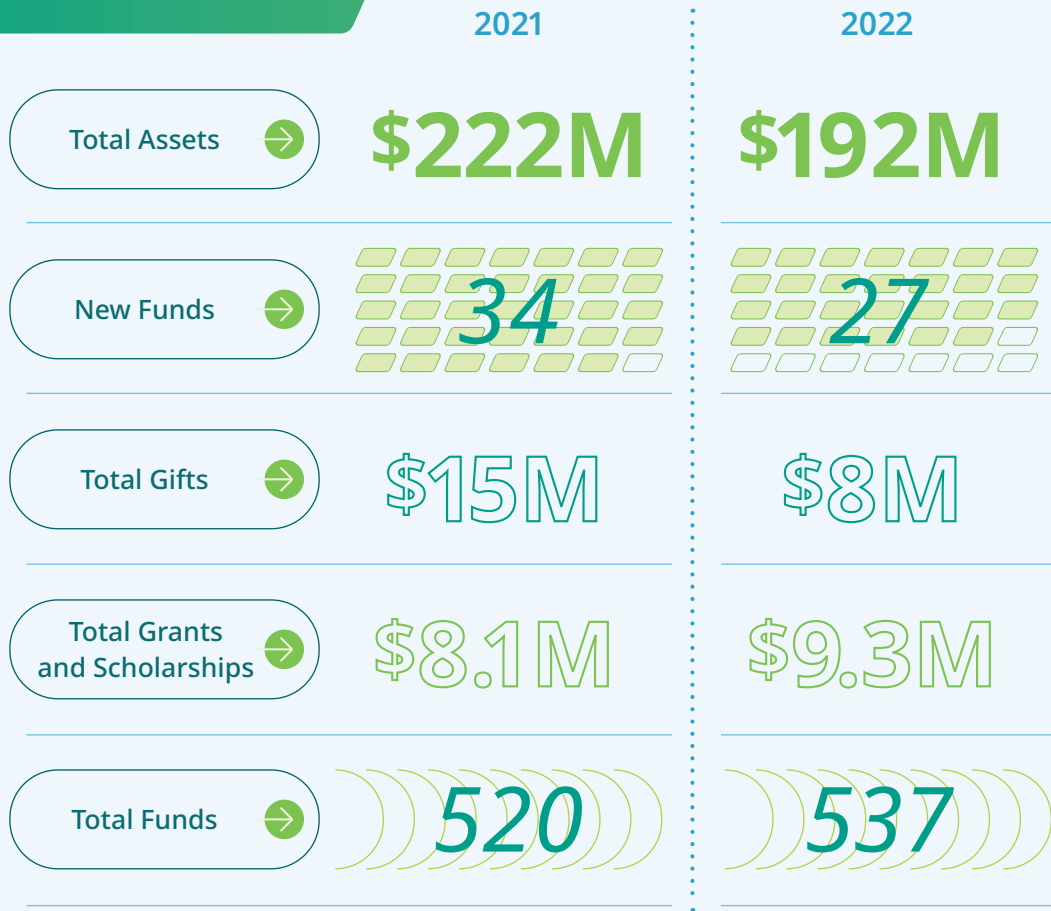
## ➤ Organizational Excellence Fund

The Community Foundation exists to help people make their charitable giving more impactful, to connect funding to effective nonprofits through grantmaking, and to provide leadership to address community needs and improve the quality of life for the place we call home. The Organizational Excellence Fund allows the Community Foundation to continue to serve nonprofits and make changes on issues that impact our community the most.

**GIVE TODAY!**



# Financial Snapshot



## Thank You!

What an impactful 2022! Over the last 100 years, we've made great strides, and are inspired to do more. We're ever grateful for the unwavering support *from* our community, *for* our community. Together, we were able to help individuals with their charitable giving, provide funding to local nonprofits, and demonstrate leadership to address community needs. As a result, we continue to move toward greater well-being and quality of life for *everyone*. And with your steadfast support, the future is even brighter. **Onward!**



## 2022 Board Members

Standing (L-R): Damian Gosheff, Christine Boles, Paul Sauerteig, Doug Wood, Cindy Goodman, Gary Shearer, Susan Wesner  
 Sitting (L-R): Todd Jacobs, Stephanie Crandall, Ron Menze, Heather Schoegler, Sherry Early, Rob Slusser  
 Not pictured: Jim Cook, Edmond C. O'Neal III, Shelley Walker, Denita Washington

- Heather Schoegler, Chair**  
Director of Strategic Educational Partnerships, Parkview Health
- Ron Menze, Vice Chair**  
Retired Partner/Architect, MKM Architecture + Design
- Christine Boles, Secretary**  
Director of Human Resources, Physicians Health Plan of Northern Indiana, Inc.
- Rob Slusser, Treasurer**  
Market President, Farmers & Merchants State Bank
- Sherry Early, At-Large**  
Executive Director, Incremental Development Alliance
- Doug Wood, At-Large**  
Market President, Fort Wayne Centier Bank
- Jim Cook**  
Regional President, STAR Financial Bank
- Stephanie Crandall**  
Director of Intergovernmental Affairs, City of Fort Wayne
- Cindy Goodman**  
Investment Officer III, VP, Old National Wealth Management
- Damian Gosheff**  
Attorney and Founder, Gosheff Estate & Trust Law, LLC
- Todd Jacobs**  
Chief Financial Officer, AWS Foundation
- Edmond C. O'Neal III**  
President, Northeast Indiana Works
- Paul Sauerteig**  
Attorney at Law, Snow & Sauerteig LLP
- Gary Shearer**  
President and CEO, Physicians Health Plan of Northern Indiana, Inc.
- Shelley Walker**  
Project Leader, BF Goodrich
- Denita Washington**  
Executive Director, Girlz Rock and Adams Township Trustee
- Susan Wesner**  
Chief Financial Officer, Greater Fort Wayne Inc.



## 2023 Staff Members

(L to R): Rhonda Pequignot, Alex McCavit, Lisa Pickerman, Brad Little, Colleen Helmken, Sydney Little, Kiley Tate-Potts, Lori Voght, Jaren Harmon, Heidi Ludwig, Sarah Knoch, Alison Gerardot, Cassie Beer, Nyke Bounket, Amanda Pant  
 (Not pictured: Antoinette Francher-Donald)

# ONWARD!

# 2022 ANNUAL REPORT

